



Town of Littleton School Committee

33 Shattuck St. * P.O. Box 1486 * Littleton, MA 01460-4486 * Phone: (978) 540-2500 * Fax: (978) 486-9581 * Website: www.littletonps.org

MATTHEW HUNT, Vice Chair
DARYL BAKER, Member

MIKE FONTANELLA, Chair

ERICA PODGORN, Secretary
JENNIFER WILSON, Member

**The Littleton School Committee will meet at the
Littleton Police Department Community Room
500 Great Road
Thursday, January 9, 2020**

Our mission is to foster a community of learners who strive for excellence and prepare each student to be a successful, contributing citizen in a global society.

**** *A G E N D A* ****

7:00 I. ORGANIZATION

- 1. Call to Order**
- 2. Pledge of Allegiance**
- 3. Consent Agenda**
 - Minutes – December 12, 2019**
 - Oath to Bills -
and Payroll**

7:05 II. INTERESTED CITIZENS

7:10 III. RECOGNITION

- 1. Student Representative(s) Report:** *Student Representative(s), Kriti Sharma and/or Madelyn O'Meara will give a report of events for each school.*
- 2. A local resident has made a generous donation to be applied toward Shaker Lane Lunch Accounts.** *Dr. Clenchy would like to thank a community member for donating \$500 to our School Lunch Program to be put forward outstanding balances. The donor would like to remain anonymous.*
- 3. Other**

It is the policy of the Littleton Public Schools not to discriminate on the basis of race, gender, religion, national origin, color, homelessness, sexual orientation, gender identity age or disability in its educational programs, services, activities or employment practices. Further information may be obtained by contacting Justine Muir, District Equity Coordinator at 978-540-2500, jmuir@littletonps.org or 33 Shattuck Street, P.O. Box 1486, Littleton, MA 01460.

Our mission is to foster a community of learners who strive for excellence and prepare each student to be a successful, contributing citizen in a global society.

7:15 IV. NEW BUSINESS

1. School Committee Representative to the Town of Littleton Finance Committee:

The School Committee will discuss the next steps to fill the available seat for the School Committee Representative to the Finance Committee.

2. Delayed School Openings: *Superintendent Clenchy will make a request to cancel afternoon professional development/parent teacher conferences during delayed school openings and hold afternoon classes for students and staff.*

7:25 V. PRESENTATION

1. Hour of Code: *Heidi McGregor k-5 Stem Integration Specialist and Todd Shoemaker, Middle School Technology Teacher will give a presentation on the Hour of Code.*

2. Draft Calendar 2020/2021 School Year: *First reading of proposed 2020-2021 School Calendar.*

3. Proposed 2020/2021 School Committee Calendar: *Superintendent Clenchy will present the proposed 2020/2021 School Committee Calendar.*

8:25 VI. INTERESTED CITIZENS

8:30 VII. SUBCOMMITTEE REPORTS

1. PMBC

2. Budget Subcommittee

3. Policy Subcommittee: (see LPS website to view all policies)

Motion for 2nd reading of the following reviewed policy:

Policy IMG: Animals in School

<http://www.littletonps.org/school-committee/school-committee-policies>

8:35 VIII. ADJOURNMENT/EXECUTIVE SESSION

Motion to move into Executive Session for the purpose of contract negotiations with no intention to return to Open Session.

**NEXT MEETING DATE
January 23, 2020
Littleton Police Department Community Room
500 Great Road**

It is the policy of the Littleton Public Schools not to discriminate on the basis of race, gender, religion, national origin, color, homelessness, sexual orientation, gender identity age or disability in its educational programs, services, activities or employment practices. Further information may be obtained by contacting Justine Muir, District Equity Coordinator at 978-540-2500, jmuir@littletonps.org or 33 Shattuck Street, P.O. Box 1486, Littleton, MA 01460.

Our mission is to foster a community of learners who strive for excellence and prepare each student to be a successful, contributing citizen in a global society.



Town of Littleton School Committee

33 Shattuck St. * P.O. Box 1486 * Littleton, MA 01460-4486 * Phone: (978) 540-2500 * Fax: (978) 486-9581 * Website: www.littletonps.org

MATTHEW HUNT, Vice Chair
DARYL BAKER, Member

MICHAEL FONTANELLA, Chair

ERICA PODGORN, Secretary
JENNIFER WILSON, Member

SCHOOL COMMITTEE MINUTES December 12, 2019 7:00 PM

PRESENT: Mike Fontanella
Matthew Hunt
Daryl Baker
Jennifer Wilson

ALSO PRESENT: Kelly Clenchy
Steve Mark
Bettina Corrow

NOT PRESENT: Erica Podgorni

CALL TO ORDER

Mike Fontanella called the meeting to order at 7:01p.m.

On a motion by Daryl Baker, and seconded by Jennifer Wilson, it was voted to approve the Dec. 5, 2019 consent agenda as presented. (AYE: Unanimous). Motion carried.

INTERESTED CITIZENS

None

RECOGNITION

1. Superintendent Clenchy acknowledged the wonderful winter concert that took place at LHS, where 13 different numbers were performed by LPS students.

PRESENTATION

1. Recycling Initiative: Margaret Gibbs gave a presentation on a Recycling Initiative program. What is Terracycle? A company who wants to eliminate the idea of waste, and instead treat waste as resources • Works with companies who sponsor recycling efforts for hard-to-recycle materials (different companies sponsor different "brigades") • Once collected and separated by material, plastics are cleaned

It is the policy of the Littleton Public Schools not to discriminate on the basis of race, gender, religion, national origin, color, homelessness, sexual orientation, gender identity, age or disability in its educational programs, services, activities or employment practices. Further information may be obtained by contacting Justine Muir, District Equity Coordinator at 978-540-2500, jmuir@littletonps.org or 33 Shattuck Street, P.O. Box 1486, Littleton, MA 01460.

Our mission is to foster a community of learners who strive for excellence and prepare each student to be a successful, contributing citizen in a global society.

and pelletized and used to make new recycled products such as park benches, children's playgrounds, and waste receptacles.

• What is the Tom's of Maine brigade? Sponsors recycling of empty oral care products, deodorant containers (no aerosols) and toothbrushes - Any brand accepted • Terracycle pays for shipping to their NJ facility, as well as about 2 points per item - points translate to cash for non-profits • Once collected, the hygiene products are separated by composition. The separated items are then cleaned, shredded, and made into new recycled products.

• Other brigades available Personal Care: (tubes, bottles, caps, lids, plastic packaging) • Cosmetics (no aerosol cans, nail polish bottles or nail polish remover bottles) • Skin care (lotions & cleansers) • Lip, Ear, Eye, & Foot care • Vitamins, minerals, and supplements packaging (blister packs, tubes, bottles, caps, lids, cans, boxes; no prescription bottles) • All brands of air freshener cartridges and plugs, packaging and flexible film packaging, and trigger heads. All brands cleaning products pumps and trigger heads (i.e. soap, glass cleaners, all-purpose cleaners).

• Terracycling in the schools: Preliminary Meeting with Superintendent Clenchy & Energy Manager Dave Riley • Green Team at High School will help coordinate collection boxes • Benefits and services for kids and the community.

The School Committee members were all in favor of this program. This gives the opportunity to raise awareness of recycling and helping the environment. A box will be placed in each school for collection.

2. 2019 MCAS Report presented by Superintendent Dr. Kelly Clenchy, Interim Director of Curriculum Elizabeth Steele, Principal Dr. John Harrington, Assistant Principal Keith Comeau, Principal Jason Everhart, and Principal Cheryl Temple.

Transition to Next-Generation MCAS for 2019 MCAS Results **State and District**

- Spring 2019 - All tests in grades 3-8, grade 10 ELA and Math = Computer-Based
- First administration of next-generation tests for Grade 10 ELA and Math
 - Based on MA 2017 revised curriculum frameworks
 - Aligned to NAEP and evidence-based definitions of college and career readiness
 - Mrs. Steele touched upon interim CD standard for the classes of 2021 and 2022. The scaled score range only impacted a small number of students which has been addressed by the High School Principal and Assistant Principal.

Percentage of students Meeting or Exceeding Expectations in English Language Arts:

Grades 3-8: LPS 67 compared to State 52

Grade 10: LPS 84 compared to State 61

Percentage of students Meeting or Exceeding Expectations in Mathematics:

Grades 3-8: LPS 62 compared to State 49

Grade 10: LPS 83 compared to State 59

Percentage of students Meeting or Exceeding Expectations in Science:

Grades 5-8: LPS 65 compared to State 48

Grade 10: LPS 92 compared to State 74

Russell Street School 2019 MCAS Results and Next Steps

Highlights – all scores were at or above state average

Gr 3 ELA +9% Math +4%

Gr 4 ELA Even Math +12%

Gr 5 ELA -9% (Median SGP 43.5 to 55.1) Math -8% (Median SGP 49 to 58.9)

Next Steps: Continue Vertical team PD in reading and writing. 45-min WIN “What I Need” Block, Dreambox for the whole school year. In addition, incorporate more writing opportunities, practice coach plus, Common Core writing tie to stories being read. Writing Curriculum Committee, vocabulary development in

content areas. Introduce fractions earlier in grade 4 and 5. Incorporate MCAS practice questions into the daily curriculum.

Littleton Middle School 2019 MCAS Results and Next Steps
Student Growth Percentiles: (0-39 SGP Low, 40-60 SGP Moderate, 61-99 SGP High)
Gr 6 ELA 51% Math 43%
Gr 7 ELA 43% Math 63%
Gr 8 ELA 54% Math 54%

Subgroup Areas of strength
Cohort 2023 (Current 9th Grade)
ELA: Students with Disabilities (+2.3 SS), Economically Disadvantaged (+3.8 SS)
Math: Econ. Disadvantaged (+7 SS), High Needs (+2.1 SS)
Cohort 2024 (Current 8th Grade)
Math: Econ. Disadvantaged (+9.7 SS), High Needs (+5.5 SS)
ELA: High Needs (+2.1 SS*)
Cohort 2024 (Current 8th Graders)
ELA: Students with Disabilities (-5.1 SS)
Cohort 2025 (Current 7th Graders)
Math: High Needs (-4.7 SS)
ELA: High Needs (-2 SS)

Littleton High School 2019 MCAS Results and Next Steps
Results by Achievement Level and Mean Student Growth Percentile
Gr 10 ELA 88% Math 86% Gr 9 96%

- Key Points**
- **88%** Students Exceeding/ Meeting Expectations ELA
SGP= 45.1
 - **High achievement**
86% Students Exceeding/ Meeting Expectations Math;
SGP= 63.9
 - **High achievement & High Growth in Math**
96% Students Proficient / Advanced in Science

Next Steps:
Continued preparation for Next Generation and computer-based testing in English and Math and also in Science Technology and Engineering
Instructional Adjustments as needed

- What alterations in instructional and assessment practice is needed for success on the new style of questions within the test

Proactive approach and frequent communication with parents of academically struggling students and students who scored in the “Not Meeting” category
Continued Early Intervention in 9th and 10th grades

VOCAL (Views of Climate and Learning) Preliminary Data was presented. Littleton Public Schools’ students scored overall higher than the State in almost all Climate areas.

The School Committee thanked the principals and Interim Director of Curriculum for their work on this MCAS data and their continuing work with the students. The MCAS Presentation will be added to the District web site.

3. NWEA MAP Growth presented by Interim Director of Curriculum, Elizabeth Steele on the NWEA MAP student growth assessments
1. What are MAP Growth Assessments?
 2. What is the MAP Growth testing experience within LPS?

- 142
143 3. How are MAP Growth assessments scored?
144 4. What do the reports and data say?
145 5. What are highlights of the 2018-2019 MAP Growth assessments?
146

147 **“MAP® Growth™ measures what students know and informs what they’re ready to learn next.”**

148 Dynamically adjusts to student responses

149 To create a personalized assessment

150 To measure performance accurately
151

152 **What is the MAP Growth testing experience within LPS?**

- 153 ▪ Computer-based
 - 154 ▪ Audio instruction for Grade 2 Assessment to support non-readers
 - 155 ▪ Testing accommodations are provided when appropriate
 - 156 ▪ Untimed assessment, although NWEA states the average time of completion is under 60 minutes
 - 157 ▪ Students are not expected to get every question correct
 - 158 ▪ Adaptive Assessment:
 - 159 ▪ Provide a challenging test for every student.
 - 160 ▪ Each student has the same opportunity to succeed and maintain a positive attitude toward
 - 161 testing:
 - 162 ▪ Experience of high achieving student
 - 163 ▪ Experience of struggling learner
 - 164 ▪ Dynamically built based on achievement level of student to provide accurate and
 - 165 reliable information for every student
- 166

167 **Key Features of MAP Growth Assessments**

168 Provide valid, longitudinal data based on Equal Interval Scale, demonstrating academic growth over time.

169 Provide real-time data on student mastery and achievement on standards-based content.

170 Identify instructional level for each student independent of enrolled grade level.

171 Link to Instruction / Learning Targets / Interventions
172

173 **How are MAP Growth assessments scored?**

174 MAP Growth assessments measure student achievement and growth using the RIT scale.

175 RIT stands for Rasch UnIT.

176 The RIT scale is an equal interval scale like feet and inches on a ruler.

177 RIT scores range from about 100-300
178

179 Uses of MAP Growth:

180 Student / Class Level:

- 181 ▪ Planning for individual instruction
 - 182 ▪ Meeting individual needs (at risk, advanced)
- 183 ▪ Flexible student groupings
- 184 ▪ Monitor progress over time
185

186 School/District Level:

- 187 ▪ Identify at-risk learners for targeted interventions.
 - 188 ▪ RTI Placement (Elementary Level)
 - 189 ▪ Title I Academic Support (Elementary Level)
 - 190 ▪ LMS Math Lab & Reading Lab
- 191 ▪ Inform student placement.
- 192 ▪ Identify school level trends.
- 193 ▪ Monitor school and district performance.
- 194 ▪ Inform resource management / staff allocation
195

196 The School Committee thanked the Interim Director of Curriculum for her work on this MAP presentation
197 and suggested, going forward, that the MAP Growth Report be utilized further for presentation.

The data could include benchmark expectations as well as comparing scores from grade to grade. The MAP Growth Presentation will be added to the District web site.

INTERESTED CITIZENS

None

SUBCOMMITTEE REPORTS

1. PMBC: None

Budget Subcommittee: Pushing data to the town side at this point for further discussion.

3. Safety and Security: None

4. Policy Subcommittee: First Reading of Policies IMG: Animals in School and KBE: Relations with Parent/Booster Organizations

First Reading of Policy: IMG – Animals in Schools – Updated to Therapy Animals

First Reading of the following reviewed Policy

On a motion by Daryl Baker, and seconded Jennifer Wilson, it was voted to accept the first reading of the following policy IMG with recommended changes as reviewed and presented. (AYE: Unanimous).
Motion carried.

First Reading of Policy: KBE: Relations with Parent/Booster Organizations was postponed.

ADJOURNMENT

On a motion by Daryl Baker and seconded by Jennifer Wilson it was voted to adjourn at 9:10PM. Roll Call
Vote: Jennifer Wilson, AYE; Daryl Baker, AYE, Matthew Hunt, AYE; and Mike Fontanella, AYE.

NEXT MEETING DATE

Thursday, January 9, 2020

7:00PM

Littleton High School

DOCUMENTS AS PART OF MEETING

Recycling Initiatives

MCAS 2019 Results

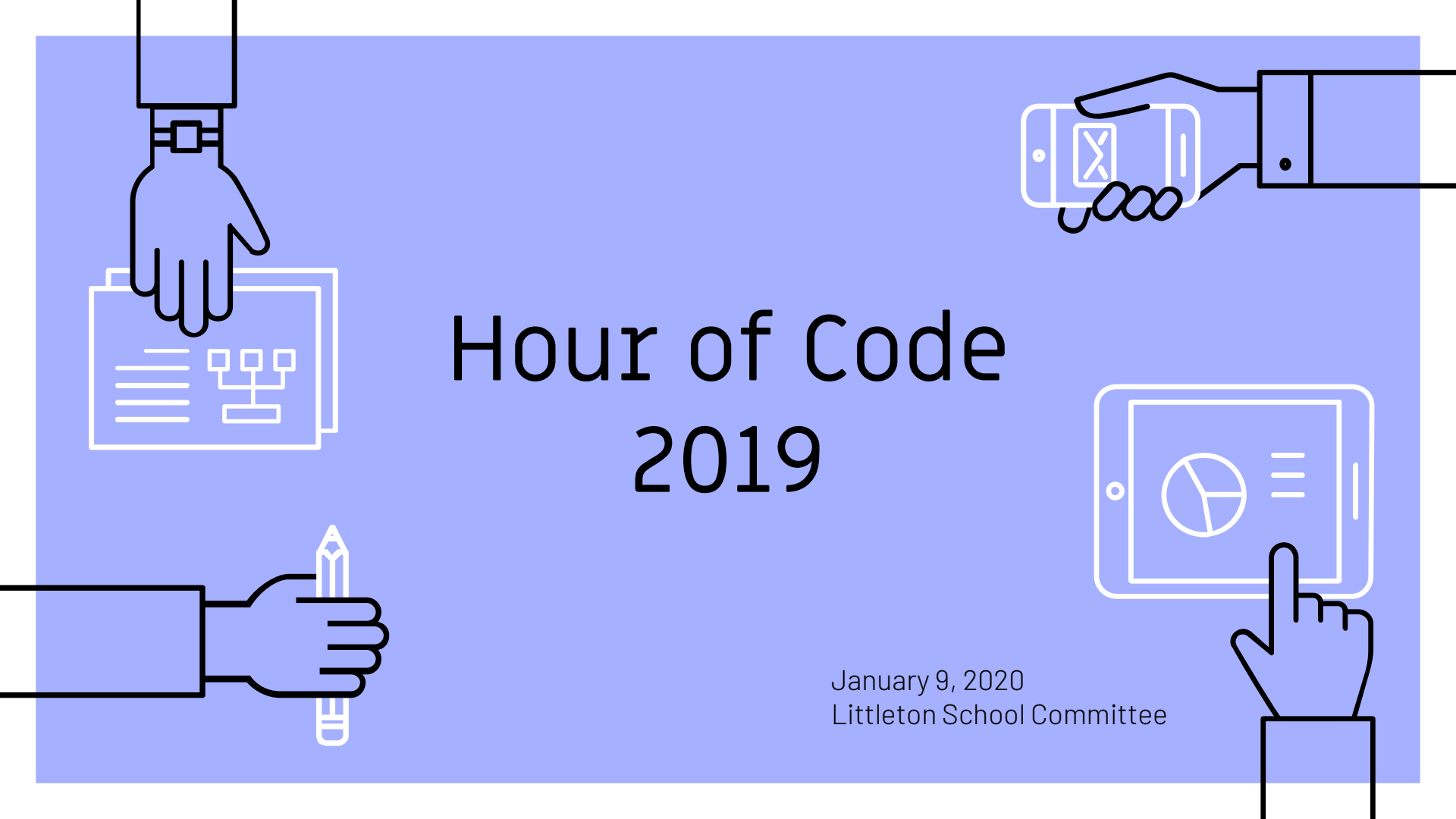
NWEA MAP Growth

Policy IMG

Policy KBE

Hour of Code 2019

January 9, 2020
Littleton School Committee



What is Hour of Code?



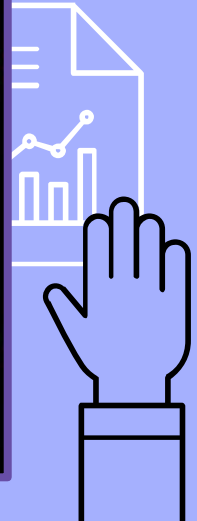
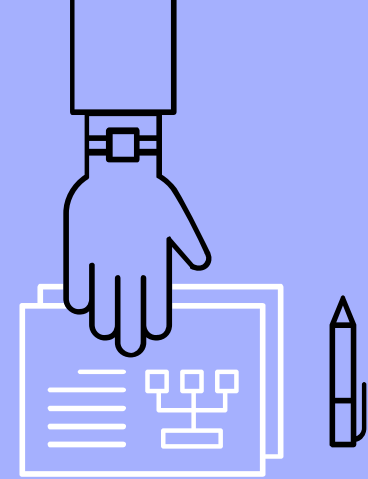
Shaker Lane





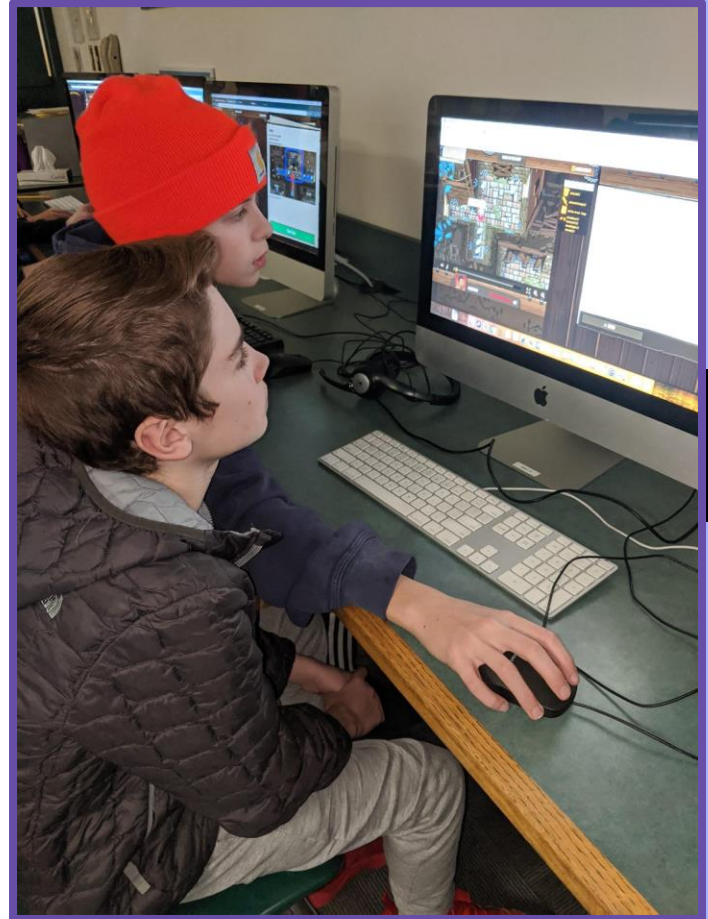
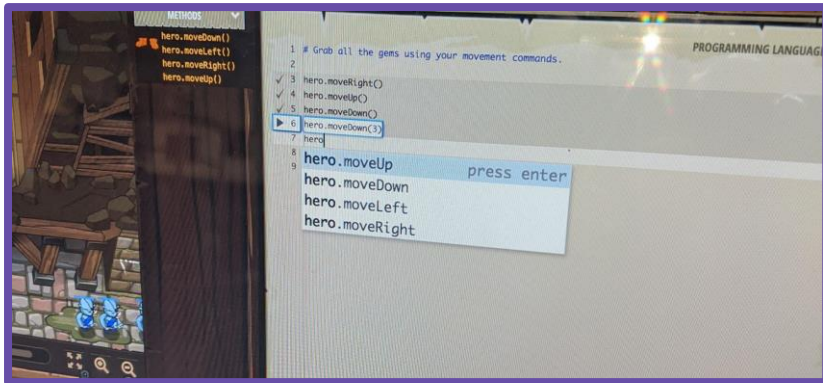
6th Grade

Students enthusiastically practice block programming for an upcoming Interdisciplinary Scratch project shared with Mrs. Pinard.



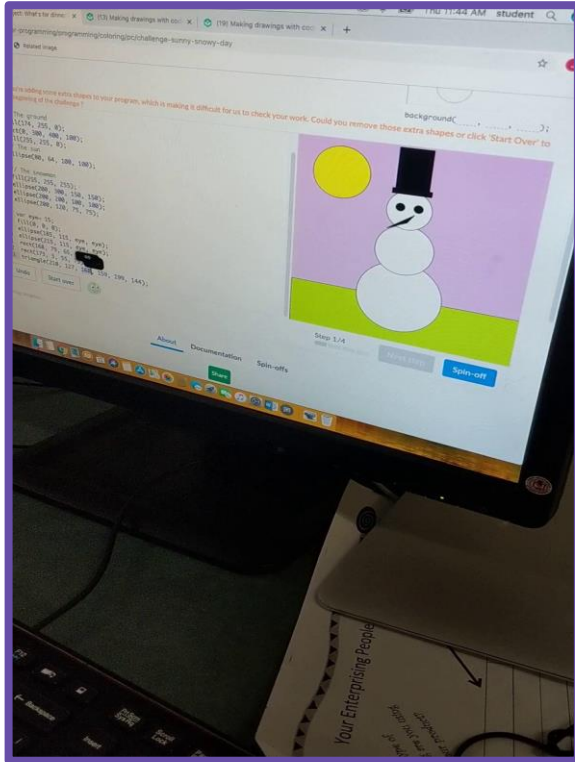
7th Grade

Students were introduced to Python, a popular programming language, with the game Code Combat. The kids loved it so much they had an extra day so they could finish the quest.



8th Grade

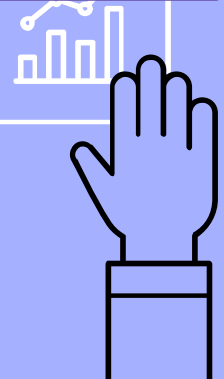
Students created Frosty the Snowman using Javascript. Some students were very creative with over 60 lines of code!



```
1 background(183, 265, 250);
2
3 // The ground
4 fill(91, 158, 81);
5 rect(0, 300, 400, 100);
6
7 // The sun
8 fill(255, 217, 0);
9 ellipse(80, 64, 100, 100);
10
11 // simple snowman
12 fill(255, 255, 255);
13 ellipse(200, 300, 150, 150);
14 ellipse(200, 200, 100, 100);
15 ellipse(200, 120, 75, 75);
16
17 // scarf
18 strokeWeight(18);
19 stroke(170, 113, 199);
20 noFill();
21 bezier(254, 150, 139, 205, 140, 57, 250, 179);
```



```
30 stroke(64, 52, 52);
31 strokeWeight(4);
32 line(150, 283, 95, 148);
33 //right arm
34 stroke(64, 52, 52);
35 strokeWeight(4);
36 line(249, 206, 319, 148);
37 //hat
38 fill(15, 61, 4);
39 stroke(0, 0, 0);
40 rect(167, 48, 65, 58, 15); // main hat part
41 rect(152, 88, 93, 21, 67); // brim
42 fill(0, 0, 0); // color of black portion
43 noStroke(); // outline of black portion
44 rect(167, 70, 67, 15, 1); // black portion
45 //pipe
46 stroke(148, 99, 25);
47 strokeWeight(4);
48 line(158, 142, 172, 136);
49 fill(148, 99, 25);
50 rect(170, 126, 10, 10, 4);
```



2020-2021 School Calendar

Approved by: SC _/_/_

SEPTEMBER (18)				
M	Tu	W	Th	F
	*1	**2	3	4
7	8	9	10	11
14	15	16A	17	18
21	22	23	24	25
28	29	30		

*Staff meeting day **Start of School

OCTOBER (21)				
M	Tu	W	Th	F
			1	2
5	6	7A	8	9
12	13	14	15	16
19	20	21A	22	23
26	27	28MSC	29MSC	30

NOVEMBER (17)				
M	Tu	W	Th	F
2	*3	4MSC	5	6
9	10	11	12	13
16	17	18A	19	20
23	24	25A	26	27
30				

*Staff PD / Election Day

DECEMBER (17)				
M	Tu	W	Th	F
	1	2A	3	4
7	8	9EC	10EC	11
14	15EC	16	17	18
21	22	23	24	25
28	29	30	31	

JANUARY (19)				
M	Tu	W	Th	F
				1
4	5	6	7	8
11	12	13A	14	15
18	19	20	21	22
25	26	27A	28	29

FEBRUARY (15)				
M	Tu	W	Th	F
1	2	3	4	5
8	9	10A	11	12
15	16	17	18	19
22	23	24	25	26

MARCH (23)				
M	Tu	W	Th	F
1	2	3A	4	5
8	9	10	11	12
15	16	17EC	18	19
22	23	24EC/MSC	25EC/MSC	26
29	30	31		

APRIL (16)				
M	Tu	W	Th	F
			1	2
5	6	7	8	9
12	13	14A	15	16
19	20	21	22	23
26	27	28	29	30

MAY (20)				
M	Tu	W	Th	F
3	4	5A	6	7
10	11	12	13	14
17	18	19	20	21
24	25	26	27	28A
31				

JUNE (14)				
M	Tu	W	Th	F
	1	2	3	4
7	8	9	10	11
14	15	16	17	***18A
21	22	23	24	25
28	29	30		

***Tentative Last Day of School

School Starts: September 2, 2020
 Student Days Scheduled 185 days –
June 25, 2021 Any unused “snow days” will be used to adjust the School Calendar to the State requirement of 180 days. If no days are lost due to weather or for other reasons, students could be dismissed as early as **June 18, 2021**. When determined; the last day of school will be a 3-hr. Early Release.

KEY

- A** = All District K-12 – 3 hr. Early Release
- EC** = K-5 Elementary Conferences/ 3 hr. Early Release
- MSC** = MS Conferences – 3 hr. Early Release
- () = School Days Per Month
- BACK TO SCHOOL NIGHTS AND/OR Evening Conferences**
- Schools Closed**

DRAFT**LITTLETON PUBLIC SCHOOLS****2020-2021 School Calendar****DRAFT****STARTING DATES**

September 1 Teachers return*
 September 2 Start of School **

NO SCHOOL – HOLIDAYS/VACATION DAYS/**PROFESSIONAL DEVELOPMENT**

September 4 Labor Day break
 September 7 Labor Day
 September 28 Yom Kippur
 October 12 Columbus Day
 November 3 PD Day/Election Day
 November 11 Veteran's Day
 Nov. 26 – 27 Thanksgiving Break
 Dec. 24 – Jan. 1 Holiday Break
 January 18 Martin L. King Day
 February 15 -19 Winter Break
 April 2 Good Friday
 April 19-23 Spring Break
 May 31 Memorial Day

BACK TO SCHOOL CURRICULUM NIGHTS

Thursday, Sept. 10 SL K Parent Orientation & Transitional Curriculum
 Monday, Sept. 14 MS Back to School Night
 Tuesday, Sept. 15 RS Curriculum Night
 Thursday, Sept. 17 HS Back to School Night
 Tuesday, Sept. 22 SL Grade 1, 2 Curriculum Night

EARLY RELEASE – ALL SCHOOLS (Wednesdays)

September 16 Professional Development
 October 7 Professional Development
 October 21 Professional Development
 November 18 Professional Development
November 25 Thanksgiving Break
 December 2 Professional Development
 January 13 Professional Development
 January 27 Professional Development
 February 10 Professional Development
 March 3 Professional Development
 April 14 Professional Development
 May 5 Professional Development
 May 28 (Friday) Professional Development
June 18 (Friday) Tentative Last Day of School

EARLY RELEASE – PARENT CONFERENCES

Wednesday, Oct. 28 Middle School Conference
 Thursday, Oct. 29 Middle School Conference
 Wednesday, Nov. 4 Middle School Conference
 Thursday, Dec. 3 K-5 Elementary Conference
 Wednesday, Dec. 9 K-5 Elementary Conference
 Thursday, Dec. 10 K-5 Elementary Conference
 Tuesday, Dec. 15 K-5 Elementary Conference
 Wednesday, March 17 K-5 Elementary Conference
 Wednesday, March 24 K-5 Elementary Conference
 Wednesday, March 24 Middle School Conference
 Thursday, March 25 K-5 Elementary Conference
 Thursday, March 25 Middle School Conference

EVENING PARENT CONFERENCES

Thursday, Oct. 8 High School Evening Conference
 Thursday, Oct. 28 Middle School Evening Conference
 Wednesday, Dec. 9 3-5 Elementary Evening Conference
 Thursday, Dec. 10 K-2 Elementary Evening Conference
 Wednesday, March 10 High School Evening Conference
 Wednesday, March 17 K-2 Elementary Evening Conference
 Wednesday, March 24 3-5 Elementary Evening Conference
 Thursday, March 25 Middle School Evening Conference

STARTING & DISMISSAL SCHEDULE

School	Start	Dismissal	Early Dismissal
High School	7:25AM	1:56PM	10:55AM
Middle School	7:20AM	1:45PM	10:45AM
Russell Street	8:05AM	2:30PM	11:30AM
Shaker Lane	8:50AM	3:15PM	12:15PM
Full-Day PreK	9:00AM	2:45PM	11:30AM
AM PreK	9:00AM	11:30AM	
PM PreK	12:15PM	2:45PM	

SCHOOL CLOSING / DELAY ANNOUNCEMENTS

Web: Littletonps.org Radio: WBZ (1030), WCAP (980), WRKO (680)
 TV: WBZ (4), WCBV (5), WHDH (7), and cable channel 3
 Twitter: Kelly Clenchy @kbstcl

High School Graduation Date – June 4, 2021**Gr. 8 Promotion Ceremony – June 14, 2021**

Tigers' Den will close at 4:00pm on 11/25/20 and the last day of school.

MAJOR RELIGIOUS & CULTURAL HOLIDAYS & HOLY DAYS

Sept. 18 – Sept. 20 Rosh Hashanah
 September 28 Yom Kippur
 November 14 Diwali begins
 December 10-18 Chanukah
 December 25 Christmas
 December 26 Kwanza
 March 27 Passover
 April 2 Good Friday
 April 4 Easter Sunday

MARKING PERIODS**K-5 Marking Period Ends:**

November 20, March 5, June 18

Middle School Marking Period Ends:

November 20, March 5, June 18

High School Marking Period Ends:

November 6, January 22, April 9, June 18

Town of Littleton School Committee

33 Shattuck St. * P.O. Box 1486 * Littleton, MA 01460-4486 * Phone: (978) 540-2500 * Fax: (978) 486-9581 * Website: www.littletonps.org

DARYL BAKER, Vice Chair
MATTHEW HUNT, Member

MIKE FONTANELLA, Chair

JENNIFER WILSON, Secretary
ERICA PODGORN, Member

SCHOOL COMMITTEE CALENDAR

July 1, 2020 – June 30, 2021

7:00PM

All meetings are at the *Littleton Police Department Community Room* unless otherwise noted. Meeting dates do change. Please feel free to call the School Department, check the district website at www.littletonps.org, or check the Town Hall meeting postings.

August 20 & 21, 2020 (LHS Library Seminar Room)

September 17, 2020

October 1, 2020

October 15, 2020

October 29, 2020

November 12, 2020

December 3, 2020

December 17, 2020

January 14, 2021

January 28, 2021

February 11, 2021

March 4, 2021

March 18, 2021 Public Hearing (Budget @ 7:10 p.m.)

April 1, 2021

April 15, 2021

May 6, 2021

May 20, 2021

June 3, 2021

00.00.2020 approved by School Committee

It is the policy of the Littleton Public Schools not to discriminate on the basis of race, gender, religion, national origin, color, homelessness, sexual orientation, gender identity, age or disability in its educational programs, services, activities or employment practices. Further information may be obtained by contacting Justine Muir, District Equity Coordinator at 978-540-2500, jmuir@littletonps.org or 33 Shattuck Street, P.O. Box 1486, Littleton, MA 01460.

Our mission is to foster a community of learners who strive for excellence and prepare each student to be a successful, contributing citizen in a global society.

ANIMALS IN SCHOOL

The Littleton School District is committed to providing a high-quality educational program to all students in a safe and healthy environment.

Service Animals

The Littleton School Committee does not permit discrimination against individuals with disabilities, including those who require the assistance of a service animal. The District will comply with Massachusetts and Federal Laws concerning the rights of persons with a service animal and will permit such animals on school premises and on school transportation.

For the purpose of this policy a service animal includes, “Any dog/miniature horse individually trained to do work or perform tasks for the benefit of an individual with a disability, including a physical, sensory, psychiatric, intellectual, or other mental disability. Other species of animals, whether wild or domestic, trained or untrained, are not service animals for the purposes of this definition.” (U.S. Department of Justice, Titles II and III). Service animals are not pets.

The District shall not assume or take custody or control of, or responsibility for, any service animal or the care or feeding thereof. The owner or person having custody and control of the animal shall be liable for any damage to persons, premises, property, or facilities caused by the service animal, including, but not limited to, clean up, stain removal, etc.

If, in the opinion of the School Principal or authorized designee, any service animal is not in the control of its handler, or if it is not housebroken, the service animal may be excluded from the school or program. The service animal can also be excluded if it presents a direct and immediate threat to others in the school. The parent or guardian of the student having custody and control of the animal will be required to remove the service animal from District premises immediately.

If any student or staff member assigned to the classroom in which a service animal is permitted suffers an allergic reaction to the animal, the person having custody and control of the animal will be required to remove the animal to a different location designated by the building Principal or designee and an alternative plan will be developed with appropriate District staff. Such plan could include the reassignment of the person having custody and control of the animal to a different classroom. This will also apply if an individual on school transportation suffers an allergic reaction. In this case, an alternate plan will be developed in coordination with appropriate school, district, and transportation staff and will include the involvement of the parents/guardians of the student.

When a student will be accompanied by a service animal at school or in other District facilities on a regular basis, a student’s parent or guardian, as well as the animal’s owner and any other person who will have custody and control of the animal will be required to sign a document stating that they have read and understood the school’s regulations specific to service animals.

The Superintendent of Schools or his/her designee shall be responsible for developing procedures to accommodate a student's use of service animals in District facilities and on school transportation vehicles.

Therapy Animals

The school district supports the use of therapy animals for the benefit of its students, subject to the conditions of this policy. Benefits from working or visiting with a therapy animal include, reduced stress, improved physical and emotional well-being, decreased anxiety, improved self-esteem and normalization of the environment increasing the likelihood of academic success. Examples of activities that students may engage in with a therapy animal include petting and/or hugging the animal, speaking to the animal, giving the animal simple commands to which the animal is trained to respond and reading to the animal.

Animal Assisted Activities and Animal Assisted Interactions are non-goal driven interactions where the specific content of the visit is spontaneous and is meant to provide motivational, educational and/or recreational activities that enhance the quality of life.

Animal Assisted Therapy is a goal driven intervention which is directed and/or delivered by a health, human or education service professional and is meant to improve physical, social, emotional and/or cognitive functioning of an individual.

A therapy animal is an animal who has been individually trained, evaluated and registered with his/her handler to provide animal assisted activities, animal assisted therapy and animal assisted interactions within a school or other facility. Therapy animals are not "emotional support animals" or "service animals."

A handler is an individual school district staff member, contracted service, or volunteer who owns a therapy animal and who has been individually trained, evaluated, and registered with their therapy animal to provide animal assisted activities, animal assisted therapy and animal assisted interactions within a school or other facility.

A therapy animal is the personal property of the handler and is not the property of the school district. The handler shall assume full responsibility for the therapy animal's care, behavior and suitability for interacting with students and others in the school while the therapy animal is on school district property.

Therapy Animal Standards and Procedures

The following requirements must be satisfied before a therapy animal will be allowed in school buildings or on school district property.

Request: At the request of the principal or the principal's designee, a handler who wishes to bring a therapy animal on school property, shall submit a completed written request form to the Superintendent or the Superintendent's designee, for approval. The request for approval shall be

submitted each school year, or whenever a handler wishes to use a different therapy animal. Such approval may be rescinded at any time by the Principal and/or Superintendent. Once the Superintendent or Superintendent designee approves the request, a protocol outlining the intended use of the therapy animal inclusive of scheduled times will be submitted and authorized by the school Principal and Superintendent.

Training and Registration: The handler shall submit proof of registration as a therapy animal handler with each individual therapy animal that will be utilized within the school district. Such registration will be from an organization that requires an evaluation of the therapy animal and handler prior to registration. Registration shall remain current and in good standing at all times.

Health and Immunization: Proof from a licensed Veterinarian indicating that the therapy animal is in good health and is current with all required vaccinations.

Licensing: The handler shall provide proof of licensure from the local licensing authority.

Insurance: The handler shall submit a copy of an insurance policy that provides liability coverage for the work of the handler and therapy animal while they are on school district property.

Exclusion or Removal from School District Property: A therapy animal may be excluded from school district property if the school administrator determines that: (1) The handler does not have control of the therapy animal; (2) The therapy animal is not housebroken; (3) The therapy animal presents a direct and immediate threat to others in the school; (4) The therapy animal's presence otherwise interferes with the educational program. The handler shall immediately remove their therapy animal from school property when instructed to do so by a school administrator.

Once the handler has been approved by the Superintendent/Designee to bring a therapy animal into the school district, such handler shall adhere to the rules of his/her registering organization as well as expectations set forth by the school district.

Educational Program

School Principals, in consultation with the Health Services Providers in each building, shall utilize the Department of Public Health publication "*Animals in the classroom, Recommendations for schools*" and review student health records to determine which animals may be allowed in the school building. No animal shall be brought to school without prior permission of the building Principal. The decision of the Principal and/or Superintendent shall be final.

Student Health

The health and well-being of students is the District's highest priority. Animals may cause an allergic reaction or otherwise impair the health of students. No animals may be brought to school or kept in the school, classroom, office or common area that may negatively impact the health of any student who must utilize that area. Animals that cause an allergic reaction or impair the

health of students shall be removed from the school immediately so that no student shall have their health impaired and each student shall have full access to available educational opportunities.

Animals in Schools

Rabies is a growing problem and any fur-bearing animal is susceptible to this disease. Infected animals could transmit this disease to students and staff. Based on the Massachusetts Departments of Health and Education recommendations, the following animals are prohibited from schools within the Littleton School District.

Wild Animals and Domestic Stray Animals - Because of the high incidence of rabies in bats, raccoons, skunks, foxes and other wild carnivores they should not be permitted in school buildings under any circumstances (including dead animals).

Fur-Bearing Animals (pet dogs, cats, wolf-hybrids, ferrets, etc.,) - These animals may pose a risk for transmitting rabies, as well as parasites, fleas, other diseases and injuries. Exceptions include, fur bearing animals that are trained service or therapy animals and law enforcement dogs. All animals must have proof of rabies vaccination (with the exception of service animals) prior to entering a school.

Exceptions may be made with the prior approval of the Superintendent of Schools.

Bats - Bats pose a high risk for transmitting rabies. Bat houses should not be installed on school grounds and bats should not be brought into the school building.

Poisonous Animals - Poisonous and venomous animals of all types are prohibited for safety reasons.

SOURCE: MASC February 2011

References: Massachusetts Department of Public Health "Animals in the classroom, Recommendations for schools"

US Department of Justice Information and technical assistance on the Americans with Disabilities Act "Revised ADA Requirements: Service Animals" (2010)

Adopted: 10 May, 2012
Reviewed: 10 December 2015
Revised: 9 January 2020